

A. Contents of Box



1. Signal Generator



2. Installation Disk



3. Power Supply



4. Power Cord



5. Batteries

B. Battery Installation

- Disconnect power supply from unit.
- Remove battery access cover on the top side of enclosure by loosening the 2 screws.
- Install 2 batteries into the battery tray. See photo below for battery installation.
- Install battery cover on the unit and tighten the 2 cover screws.



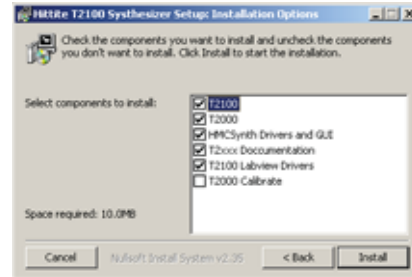
Battery Tray Installation Example

C. Unit Start-up

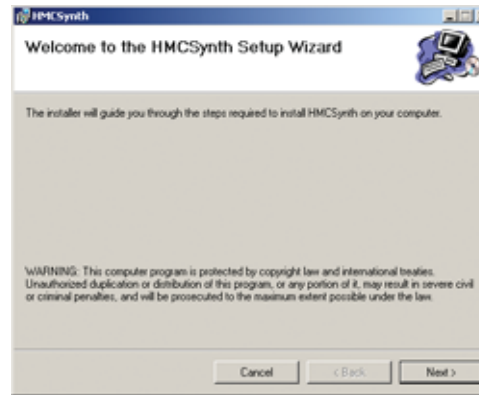
- Connect a USB cable (not supplied) between the port at the rear of the unit and a PC.
- Insert the power supply's 5-pin connector into the socket at the rear of the unit.
- Insert one end of the power cord into the power supply and then insert the other end into an electrical outlet.
- Turn on the power switch at the power supply.
- Turn on the power switch at the front of the unit.

D. Software Installation

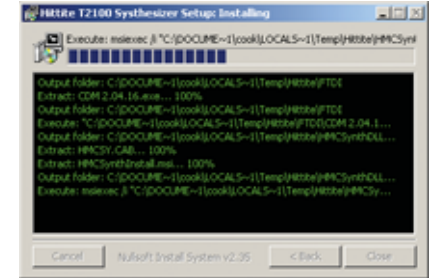
When installing the software from the CD follow the directions provided by the installation program. See below for general installation process.



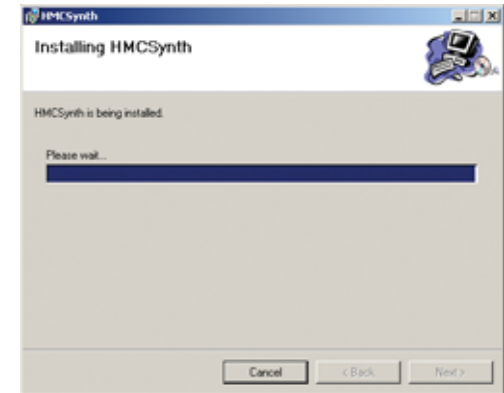
Select the desired components with the check boxes, and select the install button. The default installation is recommended.



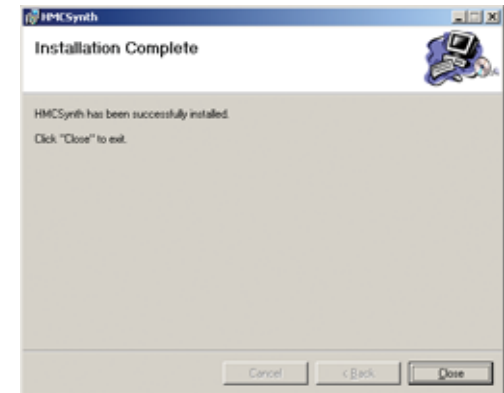
Select Next.



This window will be displayed during the install process. This window shows status of the install.



The software is being installed.



Select Close.

