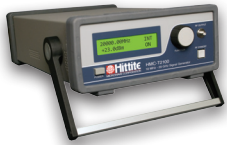


A. Contents of Box



1. Signal Generator

2. Installation Disk



3. Power Supply

4. Power Cord



5. Batteries

B. Battery Installation

- Disconnect power supply from unit.
- Remove battery access cover on the top side of enclosure by loosening the 2 screws.
- Install 2 batteries into the battery tray. See photo below for battery installation.
- Install battery cover on the unit and tighten the 2 cover screws.



Battery Tray Installation Example

C. Unit Start-up

- Insert the power supply's circular connector into the socket at the rear of the unit.
- Insert one end of the power cord into the power supply and then insert the other end into an electrical outlet.
- Turn on the power switch at the power supply.
- Turn on the power switch at the front of the unit.

D. Connect to PC

• USB

If you are using USB, please install the driver BEFORE connecting the Signal Generator. Connect a USB cable (not supplied) between the port at the rear of the unit and a PC.

If you are using GPIB or Ethernet, you do not need the driver on the CD.

Note: You may need a USB connector temporarily to configure the Ethernet.

< Details in Programmer's Manual §2.3 >

• GPIB

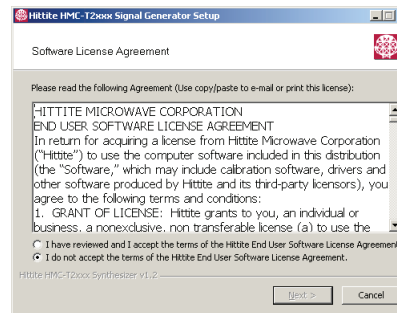
Connect cable to a PC.

• Ethernet

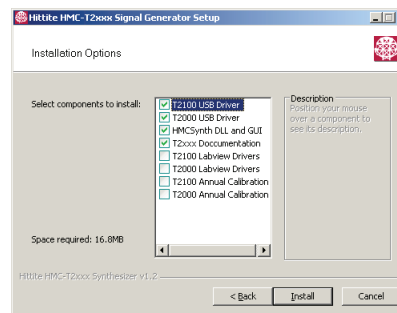
Connect cable to a PC.

E. Software Installation

When installing the software from the CD follow the directions provided by the installation program. See below for general installation process.

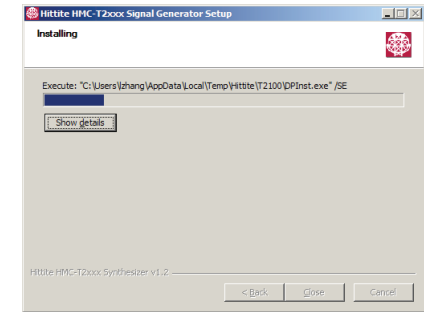


If you agree to the terms of the license agreement, select "I have reviewed and I accept the terms of the Hittite End User Software License Agreement.", then click Next to proceed. If you do not agree, do not install the software. You do not need this software if you are not using USB. The documentation can be downloaded from www.hittite.com.



Select the desired components with the check boxes, then click

the install button.



This window will be displayed during the install process. This window shows status of the install.

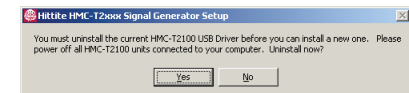
When installing under Windows XP, you may get the following message:



Press "Continue Anyway".

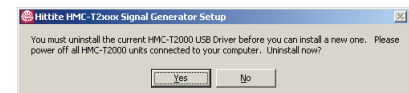
You should not get any warnings from Windows 7 or Vista.

If you already have the HMC-T2100 USB Driver installed on your PC, you will see the following message:



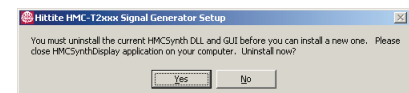
Press "Yes" to uninstall.

If you already have the HMC-T2000 USB Driver installed on your PC, you will see the following message:

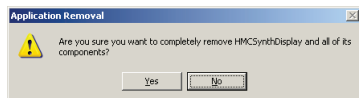


Press "Yes" to uninstall.

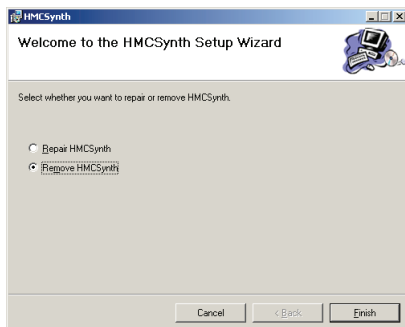
If you already have HMCsynthDisplay installed on your PC, you will see the following message:



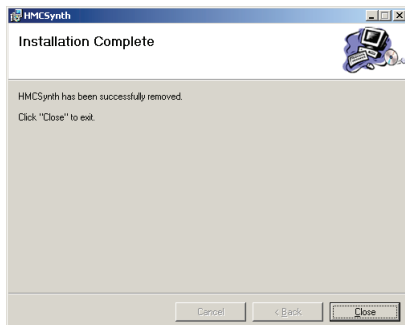
Press "Yes" to uninstall.



Press "Yes" to continue.

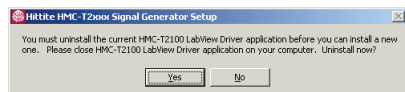


Check "Remove HMCsSynth", and press "Finish"



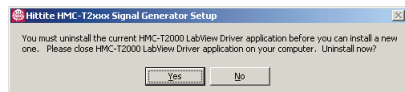
Press "Close" to continue.

If you already have HMC-T2100 LabView Driver installed on your PC, you will see the following message:



Press "Yes" to continue.

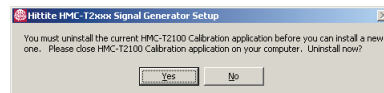
If you already have HMC-T2000 LabView Driver installed on your PC, you will see the following message:



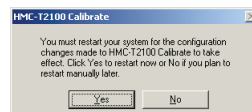
Press "Yes" to continue.

If you already have HMC-T2100 Calibration installed on your

PC, you will see the following message:

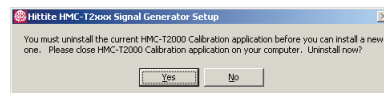


Press "Yes" to continue.

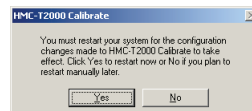


Press "No" to restart the computer manually later after you have finished the whole installation process.

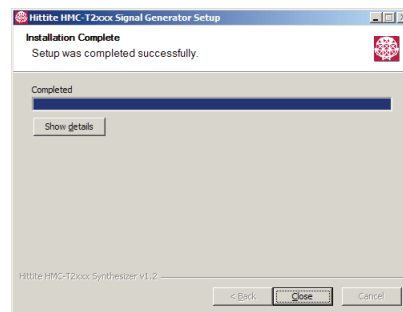
If you already have HMC-T2000 Calibration installed on your PC, you will see the following message:



Press "Yes" to continue.



Press "No" to restart the computer manually later after you have finished the whole installation process.



Select Close. The installation of all software components is finished.

F. Technical Support

Please contact te@hittite.com or call (978) 250-3343 and request the HMC-T2100 technical support department.

Quick Start Guide

Installation & Setup Guide
for HMC-T2100 & HMC-T2100B



HMC-T2100